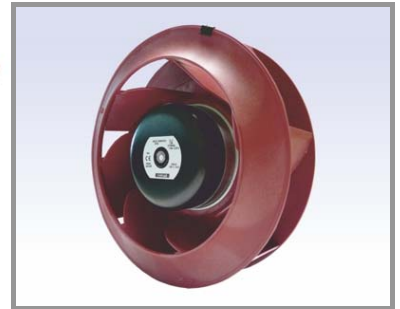


Ind. f - Revision : 02-2012

## RRE24 220x45R P/N C45-C5

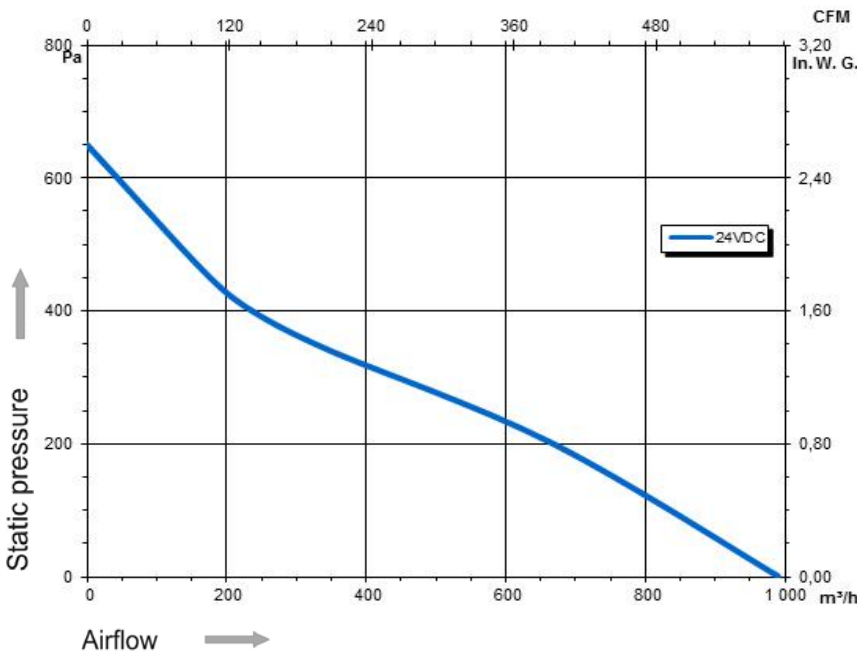
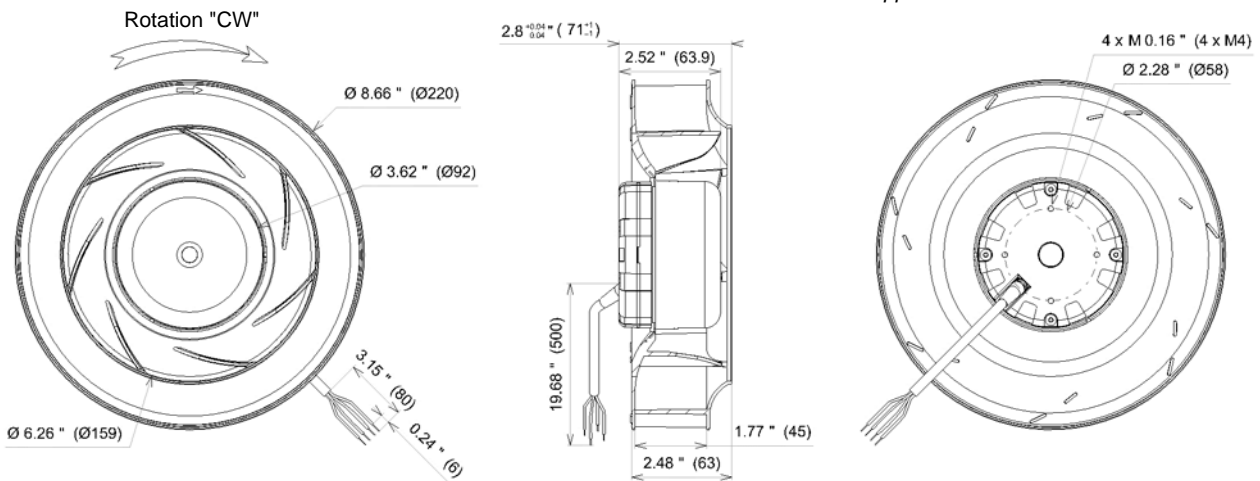
Substitute for Y43-13



Voltage	Frequency	Current	Airflow	Speed rotation	Noise level	Rotation direction	Operating temperature	ErP 2013	ErP 2015
V	Hz	A	m <sup>3</sup> /h	RPM	dBA	↻	Min / Max		
24	50	3,94	990	2 835	70	R	-20°C / +70°C	NA	NA
24			582 CFM				-4°F / +158°F		

dBa : free let out

NA : Not Applicable

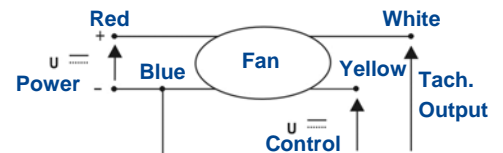


- Weight : 1,5 Kg
- Nominal voltage 24VDC (16-28VDC)
- Reverse polarity protection
- Soft start
- Locked rotor protection
- Tachometer output (open collector)
- Controlled by 0-10VDC or PWM signal
- IP44 protection depending on installation and position as per EN60034-5
- G2.5 balancing
- Rotor : black paint
- PA 6/6 UL 94 V-0 plastic impeller
- Once the main power is switched on, 2 to 20 seconds are necessary for initialisation before fan rotation.



Inlet cone

16214



Non contractual document. All specifications are subject to change without prior notice. Picture for information only.