

Data sheet

Commercial Art.No.: Z1.298.1953.0

Fuse disconnect lever THSI 6,3X32 GL 250

Fuse disconnect lever for disconnect terminal blocks selos / fasis / taris



Commercial Art.No.	Z1.298.1953.0
EAN	4015573712270
Order Unit	10

Certificates / Approvals



Technical data

General

Colour	Grey
Width/grid dimension	8 mm
Insulating housing	PA666
Inflammability class of insulation material acc. with UL94	V0
Mounting method	Direct mounting
Fuse insert	G-fuse 6.3x32 mm

Technical data

Rated voltage	500 V
Closing plate required	No
Type of insulation material	Thermoplastic
Length	57.3 mm

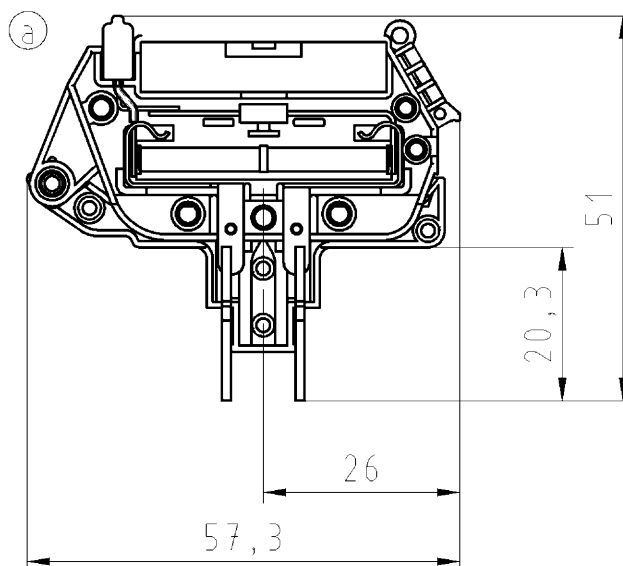
Note

Remark to rated voltage	Note fuse insert
Remark to rated current	Note fuse insert
Defect indicator	Glow lamp
Voltage type for defect indication	AC/DC
Minimum operating voltage of defective display	110 V
Maximum operating voltage of defective display	250 V

Classification

ECLASS 8.1	27141116
ETIM 7.0	EC000899
ETIM 6.0	EC000899
ETIM 5.0	EC000899
ETIM 4.0	EC000899
ETIM 3.0	EC000899

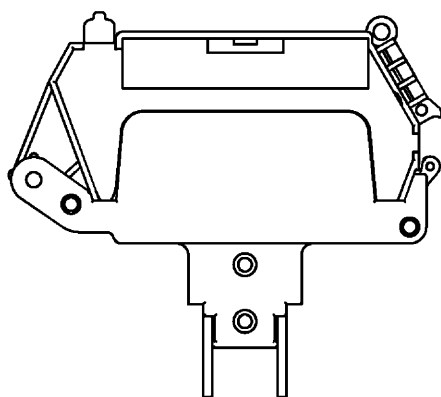
Baubreite/width 8 mm



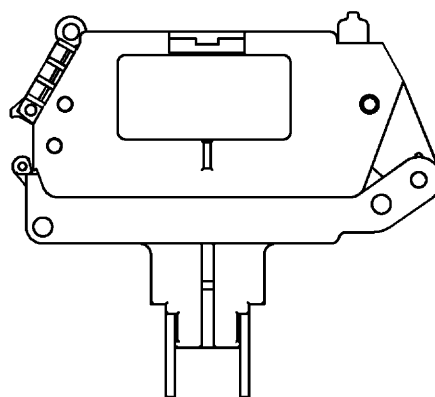
Do not disconnect under load.
Ne debracher pas sous charge.

Weitere Daten siehe Katalog
further data see catalog

Vorderansicht/front view M 1:1



Rückansicht/rear view M 1:1



Zulässige Abweichungen nach DIN 7167/Permissible deviations acc. to DIN 7167.
(This DIN-standard describes the envelope principle. According to the envelope principle the deviations of form and parallelism are limited by the size tolerances).

ja/yes ☒ Stoffverbots- und Deklarationsliste nach UU-TQM-05/03 ist einzuhalten.
Conformity with Wieland document UU-TQM-05/03 (list of prohibited /
declarable hazardous substances) to be declared!

Freitoleranz nach -
General tolerance

CAD - Zeichnung, keine manuellen Änderungen
CAD - drawing, no manual modifications allowed

1.Verwendung: -
First Use:

Blatt: 1 von 1
Sheet: of 1

	/		Werkstoff/Material	2006	Tag/Date	Name	Zeichnung Nr./Drawing No.	Index	
	/			gezeichnet drawn	13.12.	Schmitt J.			
	/			Maßstab/Scale	geprüft checked	-			-
	/			1:1	Normgepr. Stand. check	-			-
							Z1.298.1953.0 01K	a	
							Maße in mm/Dimensions are in mm		
	/	Vol.	mm³	Dfl./Surf.	mm²	Ersatz für/Replacement for: -			
	/		wieland	Type	Benennung/Title	FUSE DISCONNECT LEVER GL SI_TRENNHEBEL_GL f. Feinsicherung 6,3x32 max. 10A / GL 250V for fuse 6,3x32 max. 10A / GL 250V			
a	19.01.2011/								
Index	Datum / Blatt Date / Sheet								
Änderung/Revision									
		Elektrische Verbindungen		THS16,3x32 GL 250					

Weitergabe sowie Vervielfältigung dieses Dokuments, Verwertung und Mitteilung seines Inhalts sind verboten, soweit nicht ausdrücklich gestattet.
The reproduction, distribution and utilization of this document as well as the communication of its contents to others without express authorization is prohibited.

Z1_298_1953_0_01K_11-01-21_10h30m28s_2 CADW2036 treehan 2011-01-21T10:27:37 1000