

## Data sheet

Commercial Art.No.: 71.354.1035.0

Hood BAS GOT GI 10 M25 A1

revos BASIC size 10 hood with cable gland M25, top cable entry, single locking lever

1011011010001010010101101  
0100110110010110100101010  
101001101100111001010010  
1010100101010101010101010  
1101010011011001011010010  
1010101010010101101010011

# DIGITALIZATION IN PROGRESS

Commercial Art.No.	71.354.1035.0
EAN	4015573651395
Order Unit	1

Certificates / Approvals



## Technical data

### General

Housing material	Aluminium
Colour	Grey
Surface	With powder coating
Degree of protection (IP)	IP54
UV resistant	Yes
Inflammability class of insulation material acc. with UL94	Other
Operating temperature range min.	-40 °C
Operating temperature range max.	120 °C

### Model

DIN-size	10
Model	male
Locking mechanism	Single locking lever
Cable entry	Above
Type of cable	Gland nut
With cable screw gland	Yes
Thread size M	25
Thread size PG	
Hinged lid	No
EMC-version	No
Length	89 mm
Width	43 mm
Height	53 mm

### Classification

ECLASS 8.1	27440202
ETIM 7.0	EC000437
ETIM 6.0	EC000437

ETIM 5.0	EC000437
ETIM 4.0	EC000437
ETIM 3.0	EC000437

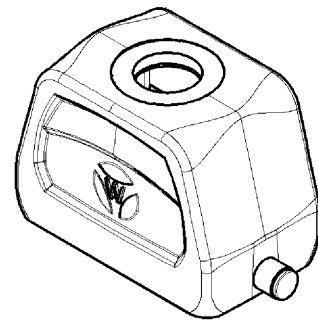
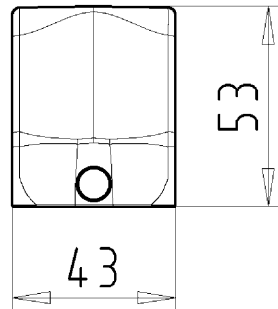
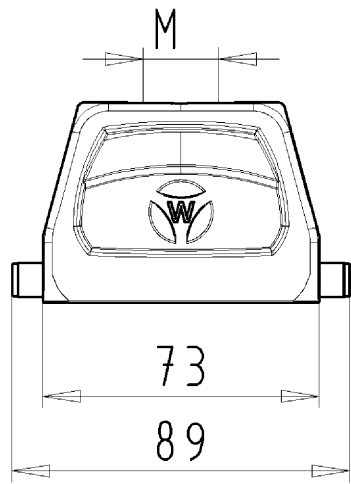
## Fits with

Commercial Art.No.:	Article-type description:	Description:
71.372.1035.0	Hood BAS GOT GL 10 M20 A0	revos BASIC size 10 hood for cable-to-cable couplings with cable gland M20, top cable entry, single locking lever
71.372.1035.1	Hood BAS GOT GL 10 M20 A1	revos BASIC size 10 hood for cable-to-cable couplings with threaded collar M20, top cable entry, single locking lever
71.320.1028.0	Bottom BAS GUT GK 10 A	revos BASIC size 10 open-bottom base single locking lever
71.325.1028.0	Bottom BAS GUT GP 10 A	revos BASIC 500V size 10 open-bottom base, with cover, single locking lever
71.330.1035.0	Bottom BAS GUT GL 10 M20 A0	revos BASIC size 10 closed-bottom base with 2 cable glands M20, single locking lever
71.330.1035.1	Bottom BAS GUT GL 10 M20 A1	revos BASIC size 10 closed-bottom base with 2 threaded collars M20, single locking lever
71.331.1035.0	Bottom BAS GUT GM 10 M20 A0	revos BASIC size 10 closed-bottom base with cable gland M20, left single locking lever
71.331.1035.1	Bottom BAS GUT GM 10 M20 A1	revos BASIC size 10 closed-bottom base with threaded collar M20 left, single locking lever
71.333.1035.0	Bottom BAS GUT GO 10 M20 A0	revos BASIC size 10 closed-bottom base with cable gland M20 bottom, single locking lever
71.333.1035.1	Bottom BAS GUT GO 10 M20 A1	revos BASIC size 10 closed-bottom base with threaded collar M20 bottom, single locking lever
71.340.1035.0	Bottom BAS GUT GR 10 M20 A0	revos BASIC size 10 closed-bottom base with 2 cable glands M20, with cover, single locking lever
71.340.1035.1	Bottom BAS GUT GR 10 M20 A1	revos BASIC size 10 closed-bottom base with 2 threaded collars M20, with cover, single locking lever
71.341.1035.0	Bottom BAS GUT GS 10 M20 A0	revos BASIC size 10 closed-bottom base with cable gland M20, left, with cover, single locking lever
71.341.1035.1	Bottom BAS GUT GS 10 M20 A1	revos BASIC size 10 closed-bottom base with threaded collar M20, left, with cover, single locking lever
71.342.1035.0	Bottom BAS GUT GT 10 M20 A0	revos BASIC size 10 closed-bottom base with cable gland M20, right, with cover, single locking lever
71.342.1035.1	Bottom BAS GUT GT 10 M20 A1	revos BASIC size 10 closed-bottom base with threaded collar M20, right, with cover, single locking lever
71.343.1035.0	Bottom BAS GUT GU 10 M20 A0	revos BASIC size 10 closed-bottom base with cable gland M20, bottom, with cover, single locking lever
71.343.1035.1	Bottom BAS GUT GU 10 M20 A1	revos BASIC size 10 closed-bottom base with threaded collar M20, bottom, with cover, single locking lever
76.330.1035.0	Bottom BAS GUT GL 10HM25 50 A0	revos BASIC size 10H closed-bottom base with 2 cable glands M25, high design, single locking lever
76.330.1035.1	Bottom BAS GUT GL 10HM25 50 A1	revos BASIC size 10H closed-bottom base with 2 threaded collars M25, high design, single locking lever
76.331.1035.0	Bottom BAS GUT GM 10HM25 50 A0	revos BASIC size 10H closed-bottom base with cable gland M25, left, high design, single locking lever
76.331.1035.1	Bottom BAS GUT GM 10HM25 50 A1	revos BASIC size 10H closed-bottom base with threaded collar, left, high design, single locking lever
76.334.1035.0	Bottom BAS GUT GL 10HM32 50 A0	revos BASIC size 10H closed-bottom base with 2 cable glands M32, high design, single locking lever
76.334.1035.1	Bottom BAS GUT GL 10HM32 50 A1	revos BASIC size 10H closed-bottom base with 2 threaded collars M32, high design, single locking lever

76.335.1035.0	Bottom BAS GUT GM 10HM32 50 A0	revos BASIC size 10H closed-bottom base with cable gland M32, left, high design, single locking lever
76.335.1035.1	Bottom BAS GUT GM 10HM32 50 A1	revos BASIC size 10H closed-bottom base with threaded collar M32, left, high design, single locking lever
76.340.1035.0	Bottom BAS GUT GR 10HM25 50 A0	revos BASIC size 10H closed-bottom base with 2 cable glands M25, with cover, high design, single locking lever
76.340.1035.1	Bottom BAS GUT GR 10HM25 50 A1	revos BASIC size 10H closed-bottom base with 2 threaded collars M25, with cover, high design, single locking lever
76.341.1035.0	Bottom BAS GUT GS 10HM25 50 A0	revos BASIC size 10H closed-bottom base with cable gland M25, left, with cover, high design, single locking lever
76.341.1035.1	Bottom BAS GUT GS 10HM25 50 A1	revos BASIC 500V size 10H closed-bottom base with threaded collar M25, left, with cover, high design, single locking lever
76.342.1035.0	Bottom BAS GUT GT 10HM25 50 A0	revos BASIC size 10H closed-bottom base with cable gland M25, right, with cover, high design, single locking lever
76.342.1035.1	Bottom BAS GUT GM 10HM25 50 A1	revos BASIC size 10H closed-bottom base with threaded collar M25, right, with cover, high design, single locking lever
76.344.1035.0	Bottom BAS GUT GR 10HM32 50 A0	revos BASIC size 10H closed-bottom base with 2 cable glands M32, with cover, high design, single locking lever
76.344.1035.1	Bottom BAS GUT GR 10HM32 50 A1	revos BASIC size 10H closed-bottom base with 2 threaded collars M32, with cover, high design, single locking lever
76.345.1035.1	Bottom BAS GUT GS 10HM32 50 A1	revos BASIC size 10H closed-bottom base with threaded collar M32, right, with cover, high design, single locking lever
76.346.1035.0	Bottom BAS GUT GT 10HM32 50 A0	revos BASIC size 10H closed-bottom base with cable gland M32, right, with cover, high design, single locking lever
76.346.1035.1	Bottom BAS GUT GT 10HM32 50 A1	revos BASIC size 10H closed-bottom base with threaded collar M32, right, with cover, high design, single locking lever

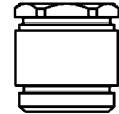
These dimensions will be especially checked at delivery  
Only inspection dimensions  
With /E marked dimensions are only valid for internal use

Diese Maße werden bei Abnahme besonders geprüft  
Ausschließliche Prüfmaße  
Mit /E gekennzeichnete Maße sind nur für interne Zwecke gültig



## Varianten/ Variants

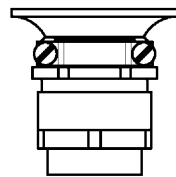
.0



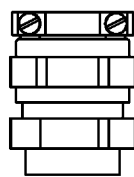
.2



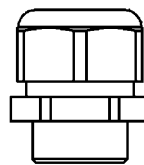
.3






.4



.5



71.35 <sup>4</sup> <sub>2</sub> .1035.5	BAS GOT GI 10 M25 M20 A 5	Kabelverschraubung(KV), IP65 /Cable gland(CG), IP65	
71.35 <sup>4</sup> <sub>2</sub> .1035.4	BAS GOT GI 10 M25 M20 A 4	KV mit Zugentlastung, IP54 /CG with strain relief, IP54	
71.35 <sup>4</sup> <sub>2</sub> .1035.3	BAS GOT GI 10 M25 M20 A 3	KV mit Zugentlastung und Knickschutz, IP54 /CG with strain relief and bend support, IP54	
71.35 <sup>4</sup> <sub>2</sub> .1035.2	BAS GOT GI 10 M25 M20 A 2	Zwischenstutzen /Bushing	
71.35 <sup>4</sup> <sub>2</sub> .1035.1	BAS GOT GI 10 M25 M20 A 1	Gewindebohrung /Thread hole	X
71.35 <sup>4</sup> <sub>2</sub> .1035.0	BAS GOT GI 10 M25 M20 A 0	Kabelverschraubung(KV), IP54 /Cable gland(CG), IP54	
Bestellnummer /Order number	Typ /Type	Varianten /Variants	dar- gestellt /drawn
Weitere Daten siehe KATALOG oder eKatalog. Additional data see CATALOG or eCatalog.		www.wieland-electric.com eshop.wieland-electric.com	

Tolerierung Size ISO 14405(Ⓔ)/Tolerance system Size ISO 14405(Ⓔ). (This ISO-standard describes the envelope principle. According to the envelope principle the deviations of form and parallelism are limited by the size tolerances).						ja/yes <input checked="" type="checkbox"/> Stoffverbots- und Deklarationsliste nach UU-TQM-05/03 ist einzuhalten. Conformity with Wieland document UU-TQM-05/03 (list of prohibited / declaimable hazardous substances) to be declared!							
Freitoleranz nach General tolerance				CAD - Zeichnung, keine manuellen Änderungen CAD - drawing, no manual modifications allowed				1.Verwendung: First Use:				Blatt: 1 von 1 Sheet: of	
	/		Werkstoff/Material  Aluminium  beschichtet/ coated  grau/ grey	2013	Tag/Date	Name	T	Zeichnung Nr./Drawing No.				Index	
	/			gezeichnet drawn	17.09.	Treschan		71.352.1035.0 13K					
	/			geprüft checked	-	-							
	/			Normgepr. Stand. check	-	-		Maße in mm/Dimensions are in mm					
	/	Maßstab/Scale 1:2											
	/	Vol.	mm³	Ofl./Surf.	mm²	Ersatz für/Replacement for: -							
	/				Type	Benennung/Title							
	/				revos	GEHAEUSEOBERTEIL							
	/				BASIC	Baugröße 10-Kabelabgang oben-M20/M25 Hood size 10-cable outlet top-M20/M25							
Index	Datum / Blatt Date / Sheet												
Änderung/Revision		Elektrische Verbindungen											

Weitergabe sowie Vervielfältigung dieses Dokuments, Verwertung und Mitteilung seines Inhalts sind verboten, soweit nicht ausdrücklich gestattet.  
The reproduction, distribution and utilization of this document as well as the communication of its contents to others without express authorization is prohibited.