

Data sheet

Commercial Art.No.: 71.343.1635.0

Bottom BAS GUT GU 16 M25 A0

revos BASIC size 16 closed-bottom base with cable gland M25, bottom, with cover, single locking lever

1011011010001010010101101
0100110110010110100101010
101001101100111001010010
10101001010101010101010
1101010011011001011010010
10101010010101101010011

DIGITALIZATION IN PROGRESS

Commercial Art.No.	71.343.1635.0
EAN	4015573624894
Order Unit	1

Certificates / Approvals



Technical data

General

Housing material	Aluminium
Colour	Grey
Surface	With powder coating
Degree of protection (IP)	IP54
UV resistant	Yes
Inflammability class of insulation material acc. with UL94	Other
Operating temperature range min.	-40 °C
Operating temperature range max.	120 °C

Model

DIN-size	16
Model	Surface mounting (base)
Locking mechanism	Single locking lever
Cable entry	Below
Type of cable	Gland nut
With cable screw gland	Yes
Thread size M	25
Thread size PG	
Hinged lid	Yes
EMC-version	No
Length	117 mm
Width	57 mm
Height	57 mm

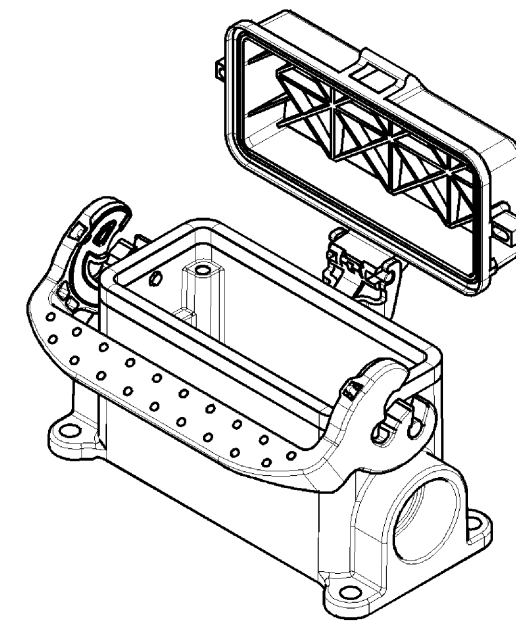
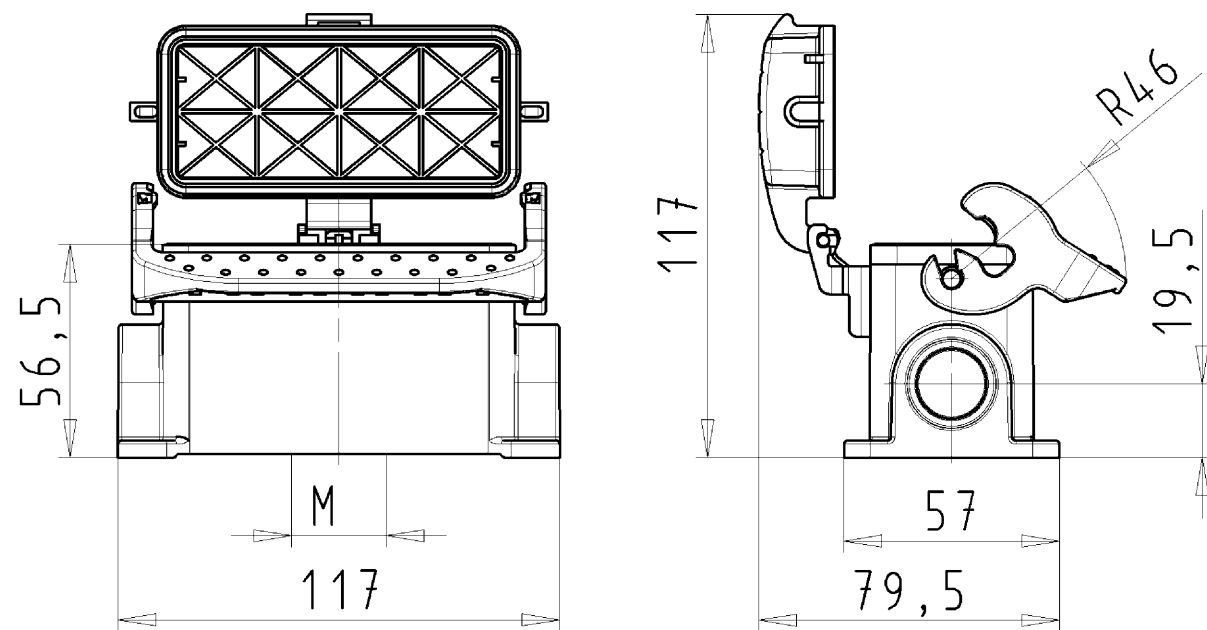
Classification

ECLASS 8.1	27440202
ETIM 7.0	EC000437
ETIM 6.0	EC000437

ETIM 5.0	EC000437
ETIM 4.0	EC000437
ETIM 3.0	EC000437

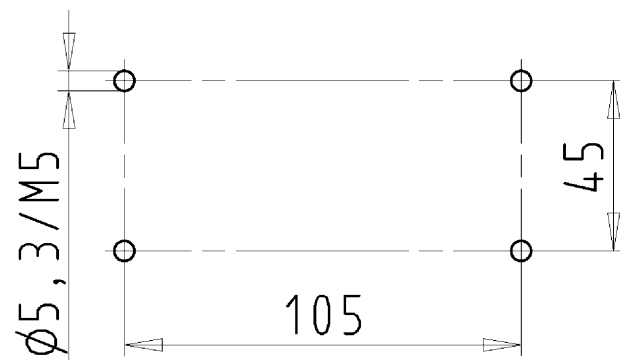
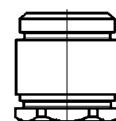
Fits with

Commercial Art.No.:	Article-type description:	Description:
71.350.1635.0	Hood BAS GOT GG 16 M25 A0	revos BASIC size 16 hood with cable gland M25, lateral cable entry, single locking lever
71.350.1635.1	Hood BAS GOT GG 16 M25 A1	revos BASIC size 16 hood with threaded collar M25, lateral cable entry, single locking lever
71.350.1635.2	Hood BAS GOT GG 16 M25 A2	revos BASIC size 16 hood with intermediate support M25, lateral cable entry, single locking lever
71.352.1635.0	Hood BAS GOT GI 16 M25 A0	revos BASIC size 16 hood with cable gland M25, top cable entry, single locking lever
71.352.1635.1	Hood BAS GOT GI 16 M25 A1	revos BASIC size 16 hood with threaded collar M25, top cable entry, single locking lever
71.352.1635.2	Hood BAS GOT GI 16 M25 A2	revos BASIC size 16 hood with intermediate support M25, top cable entry, single locking lever
71.353.1635.0	Hood BAS GOT GG 16 M32 A0	revos BASIC size 16 hood with cable gland M32, lateral cable entry, single locking lever
71.353.1635.1	Hood BAS GOT GG 16 M32 A1	revos BASIC size 16 hood with threaded collar M32, lateral cable entry, single locking lever
71.353.1635.2	Hood BAS GOT GG 16 M32 A2	revos BASIC size 16 hood with intermediate support M32, lateral cable entry, single locking lever
71.354.1635.0	Hood BAS GOT GI 16 M32 A0	revos BASIC size 16 hood with cable gland M32, top cable entry, single locking lever
71.354.1635.1	Hood BAS GOT GI 16 M32 A1	revos BASIC size 16 hood with threaded collar M32, top cable entry, single locking lever
76.351.1635.1	Hood BAS GOT GH 16H M20 A1	
76.351.1635.3	Hood BAS GOT GH 10H M20 A3	
76.352.4035.0	Hood BAS GOT GI 40HM25 50 A0	revos BASIC size 16H hood with cable gland M25, top cable entry, high design, single locking lever
76.352.4035.1	Hood BAS GOT GI 16HM25 A1	revos BASIC size 16H hood with threaded collar M25, top cable entry, high design, single locking lever
76.353.4035.0	Hood BAS GOT GG 40HM32 50 A0	revos BASIC size 16H hood with cable gland M32, lateral cable entry, high design, single locking lever
76.353.4035.1	Hood BAS GOT GG 16HM32 A1	revos BASIC size 16H hood with threaded collar M32, lateral cable entry, high design, single locking lever
76.353.4035.2	Hood BAS GOT GG 40HM32 50 A2	revos BASIC size 16H hood with intermediate support M32, lateral cable entry, high design, single locking lever
76.354.4035.0	Hood BAS GOT GI 40HM32 50 A0	revos BASIC size 16H hood with cable gland M32, top cable entry, high design, single locking lever
76.354.4035.1	Hood BAS GOT GI 40HM32 50 A1	revos BASIC size 16H hood with threaded collar M32, top cable entry, high design, single locking lever
76.360.4035.1	Hood BAS GOT GG 40HM40 50 A1	revos BASIC 500V size 16H hood with threaded collar M40, lateral cable entry, high design, single locking lever
76.362.4035.1	Hood BAS GOT GI 40HM40 50 A1	revos BASIC size 16H hood with threaded collar M40, top cable entry, high design, single locking lever





Varianten/Variants

.0



Bohr bild /Cut out

71.343.1635.1	BAS GUT GU 16 M25 A 1	Gewindebohrung /Thread hole	X
71.343.1635.0	BAS GUT GU 16 M25 A 0	Kabelverschraubung(KV), IP54 montiert /Cable gland{CG}, IP54 assembled	
Bestellnummer /Order number	Typ /Type	Varianten /Variants	dar- gestellt /drawn
Weitere Daten siehe KATALOG oder eKatalog. Additional data see CATALOG or eCatalog.		www.wieland-electric.com eshop.wieland-electric.com	

Tolerierung Size ISO 14405(®)/Tolerance system Size ISO 14405(®). (This ISO-standard describes the envelope principle. According to the envelope principle the deviations of form and parallelism are limited by the size tolerances).					ja/yes <input checked="" type="checkbox"/> Stoffverbots- und Deklarationsliste nach UU-TQM-05/03 ist einzuhalten. Conformity with Wieland document UU-TQM-05/03 (list of prohibited / declaimable hazardous substances) to be declared!					
Freitoleranz nach General tolerance			CAD - Zeichnung, keine manuellen Änderungen CAD - drawing, no manual modifications allowed			1.Verwendung: - First Use:			Blatt: 1 von 1 Sheet: of 1	
	/		Werkstoff/Material Aluminium beschichtet/coated grau/grey	2013	Tag/Date	Name	T	Zeichnung Nr./Drawing No. 71.343.1635.0 13K	Index	
	/			gezeichnet drawn	28.06.	Treschan				
	/			Maßstab/Scale	geprüft checked	-				-
	/			1:2	Normgepr. Stand. check	-				-
			Maße in mm/Dimensions are in mm							
	/	Vol. mm³		Ofl./Surf. mm²		Ersatz für/Replacement for: -				
	/		wieland		Type revos BASIC	Benennung/Title GEHAEUSEUNTERTEIL Baugröße 16-Kabelabgang 1xM25 unten Housing size 16-cable outlet 1xM25 below				
	/									
	/									
Index	Datum / Date / Sheet									
Änderung/Revision			Elektrische Verbindungen							